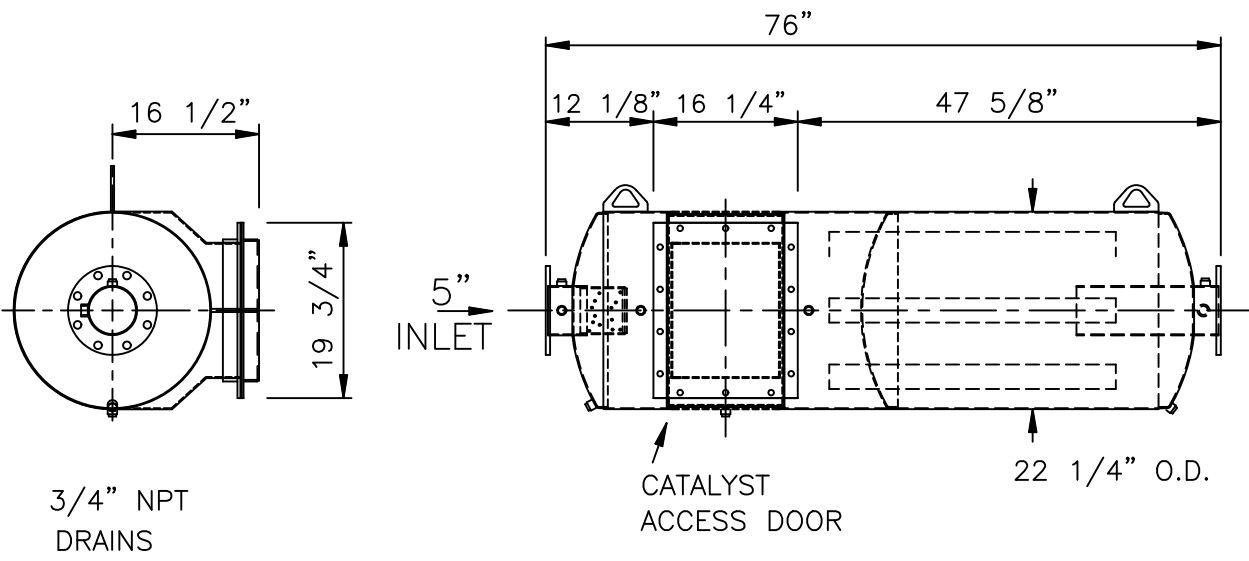


5" INLET FLANGE  
 1/2" PLATE, 10" O.D.  
 (8) 7/8" DIA. HOLES  
 ON 8 1/2" B.C. STRADDLE C.L.

5" OUTLET FLANGE  
 1/2" PLATE, 10" O.D.  
 (8) 7/8" DIA. HOLES  
 ON 8 1/2" B.C. STRADDLE C.L.



OPTIONAL DOOR FEATURE PROVIDES  
 TOP OR SIDE ELEMENT ENTRY

SERVICE: 3 WAY CATALYTIC EXHAUST SILENCER FOR RECIPROCATING ENGINE

OCTAVE BAND	63	125	250	500	1K	2K	4K	8K
INSERTION LOSS	19	30	35	35	30	30	30	30

PRESSURE DROP: (WITH ONE 14.5" O.D. CATALYST PANEL)  
 CAT G3304NA (461 CFM AT 1045°F) 5" H2O

DESTRUCTION EFFICIENCY: (WITH ONE 14.5" O.D.CATALYST PANEL)

99.4% NOX, 99.4% CO, 94% NMNEHC, 99.4% CH2O

MATERIALS OF CONSTRUCTION:

SHELL: 10 GA AND 12 GA CARBON STEEL  
 HEADS: 10 GA AND 3/16" CARBON STEEL  
 CATALYST PANELS: (1) OR (2) 3.5" THICK x 14.5" DIAMETER 304SS  
 FLANGES: 1/2" CARBON STEEL

CERTIFICATION

EXTERNAL PAINT: HIGH TEMP BLACK

WEIGHT: 320 LBS.

CUSTOMER: \_\_\_\_\_  
 CUSTOMER P.O. NO.: \_\_\_\_\_  
 DATE: \_\_\_\_\_ BY: \_\_\_\_\_

**MAXIM SILENCERS**

10635 BRIGHTON LANE  
 STAFFORD, TX, 77477  
 PHONE (832) 554-0980  
 FAX (832) 554-0990

EAC4-29-5 CATALYTIC EXHAUST SILENCER

				DRAWN	TJW	7/6/06	ORDER NO.	DRAWING NO.	REV
				CHECKED			.	150-8A12073	
No.	REVISIONS	BY	DATE	APPROVED	TJW	7/6/06	SHEET		