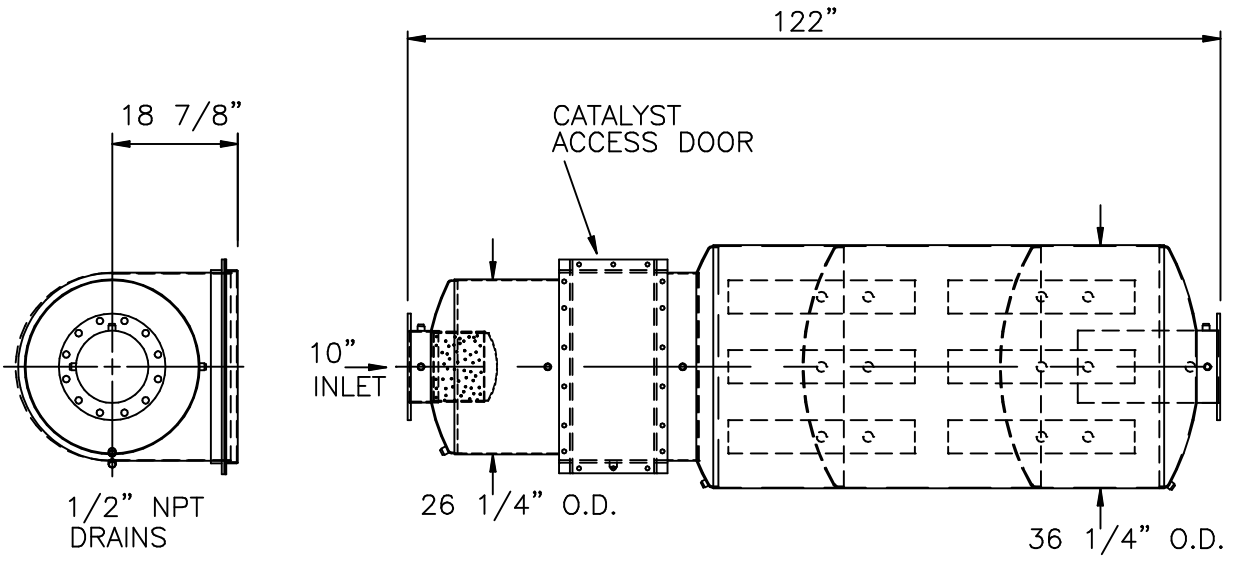


10" INLET FLANGE
 1/2" PLATE, 16" O.D.
 (12) 1" DIA. HOLES
 ON 14 1/4" B.C. STRADDLE C.L.

10" OUTLET FLANGE
 1/2" PLATE, 16" O.D.
 (12) 1" DIA. HOLES
 ON 14 1/4" B.C. STRADDLE C.L.



SERVICE: CATALYTIC EXHAUST SILENCER FOR ENGINE

OCTAVE BAND	<u>63</u>	<u>125</u>	<u>250</u>	<u>500</u>	<u>1K</u>	<u>2K</u>	<u>4K</u>	<u>8K</u>
INSERTION LOSS	22	33	33	33	33	33	33	33

PRESSURE DROP:

DESTRUCTION EFFICIENCY:

MATERIALS OF CONSTRUCTION:

SHELL: 10 GA AND 12 GA CARBON STEEL
 HEADS: 10 GA AND 3/16" CARBON STEEL
 CATALYST PANELS: (1) OR (2) 3.5" THICK x 26.5" DIAMETER 304SS
 FLANGES: 1/2" CARBON STEEL

CERTIFICATION

EXTERNAL PAINT: HIGH TEMP BLACK

WEIGHT: 1150 LBS.

CUSTOMER: _____

CUSTOMER P.O. NO.: _____

DATE: _____ BY: _____

MAXIM SILENCERS

10635 BRIGHTON LANE
 STAFFORD, TX. 77477
 PHONE (832) 554-0980
 FAX (832) 554-0990

EAC4-53-10 CATALYTIC EXHAUST SILENCER

No.	REVISIONS	APPR.	APPROVED	JJ	4/11/07	ORDER NO.	DRAWING NO.	REV
							EAC4-53-10_STD	
						SHEET 1		