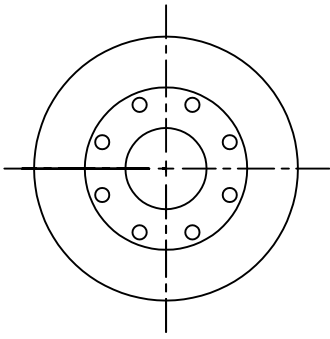
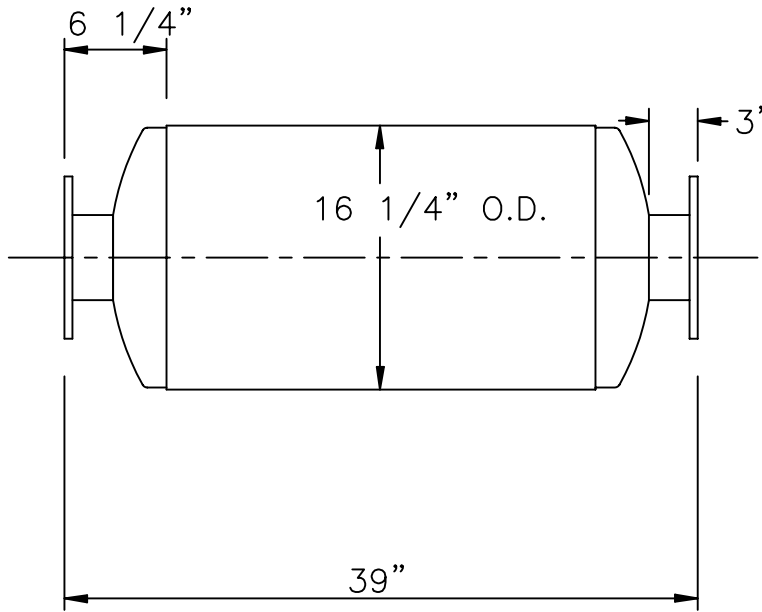


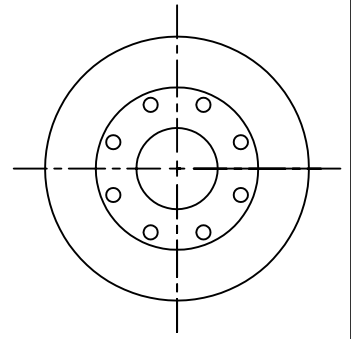
INLET END VIEW



5" INLET FLANGE  
 1/2" PLATE, 10" O.D.  
 (8) 7/8" DIA HOLES  
 ON 8 1/2" B.C.,  
 STRADDLE C.L.



OUTLET END VIEW



5" OUTLET FLANGE  
 1/2" PLATE, 10" O.D.  
 (8) 7/8" DIA HOLES  
 ON 8 1/2" B.C.,  
 STRADDLE C.L.

NOTES :

1. SERVICE: EXHAUST SILENCER FOR RECIPROCATING ENGINE
2. NOISE REDUCTION:
 

OCTAVE BAND	63	125	250	500	1K	2K	4K	8K
ATTENUATION	7	16	20	27	22	17	16	16
3. SILENCER PRESSURE DROP: (4.0)\*(Velocity Head In 5" I.D. Duct)
4. MATERIALS OF CONSTRUCTION:
  - SHELL: 12 GAGE CARBON STEEL
  - HEADS AND BAFFLE: 12 GAGE F&D CARBON STEEL
5. EXTERNAL PAINT: FLAT BLACK, HIGH TEMPERATURE
6. WEIGHT: 110 LBS

CERTIFICATION

CUSTOMER: \_\_\_\_\_  
 CUSTOMER P.O. NO.: \_\_\_\_\_  
 \_\_\_\_\_  
 \_\_\_\_\_  
 DATE: \_\_\_\_\_ BY: \_\_\_\_\_

MAXIM SILENCERS

10635 BRIGHTON LANE  
 STAFFORD, TX. 77477  
 PHONE (832) 554-0980  
 FAX (832) 554-0990

5" M21 EXHAUST SILENCER

				DRAWN	TJW	11/25/02	ORDER NO.	DRAWING NO.	REV
				CHECKED				STD5M21	
No.	REVISIONS	APPR.	APPROVED				SHEET		