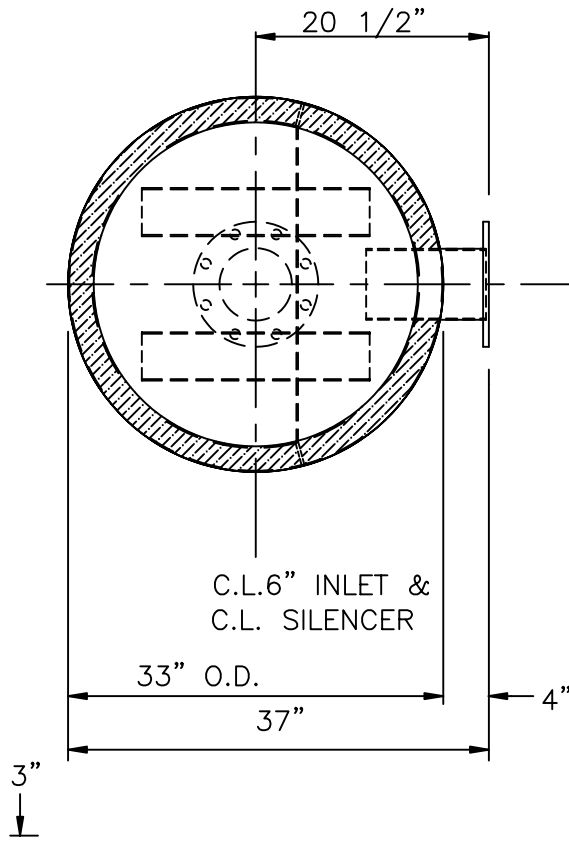


TOP VIEW



6" OUTLET FLANGE
 1/2" PLATE, 11" O.D.
 (8) 7/8" DIA. HOLES
 ON 9 1/2" B.C.
 STRADDLE C.L.

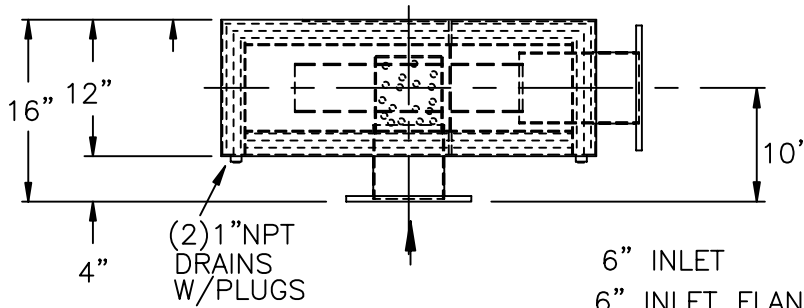
C.L. 6" INLET &
 C.L. SILENCER

33" O.D.

37"

4"

3"



SIDE VIEW

6" INLET
 6" INLET FLANGE
 1/2" PLATE, 11" O.D.
 (8) 7/8" DIA. HOLES
 ON 9 1/2" B.C.
 STRADDLE C.L.

(2) 1" NPT
 DRAINS
 W/PLUGS

MATERIALS OF CONSTRUCTION:

- SHELL: 12 GAGE CARBON STEEL
- HEADS: 10 GAGE CARBON STEEL
- PERFO: 12 GA CARBON STEEL
- PACKING: 2" FIBERGLASS (TOP, BOTTOM, SIDE WALL)

SERVICE: CRITICAL EXHAUST SILENCER FOR ENGINE EXHAUST

<u>OCTAVE BAND:</u>	63	125	250	500	1k	2k	4k	8k	
<u>TYPICAL ATTN:</u>	10	27	32	37	37	35	32	30	<u>CERTIFICATION</u>

PRESSURE DROP: 4*VELOCITY HEAD IN 6" PIPE

EXTERNAL PAINT: HIGH TEMP BLACK

WEIGHT: 290 LBS.

CUSTOMER: _____

CUSTOMER P.O. NO.: _____

DATE: _____ BY: _____

MAXIM SILENCERS

10635 BRIGHTON LANE
 STAFFORD, TX 77477
 PHONE (832) 554-0980
 FAX (832) 554-0990

6"MD26 COMPACT EXHAUST SILENCER
 (CRITICAL GRADE, INTERNALLY INSULATED)

				DRAWN	TJW	12/4/03	ORDER NO.	DRAWING NO.	REV
				CHECKED				6MD26_STD	
No.	REVISIONS	APPR.	APPROVED						