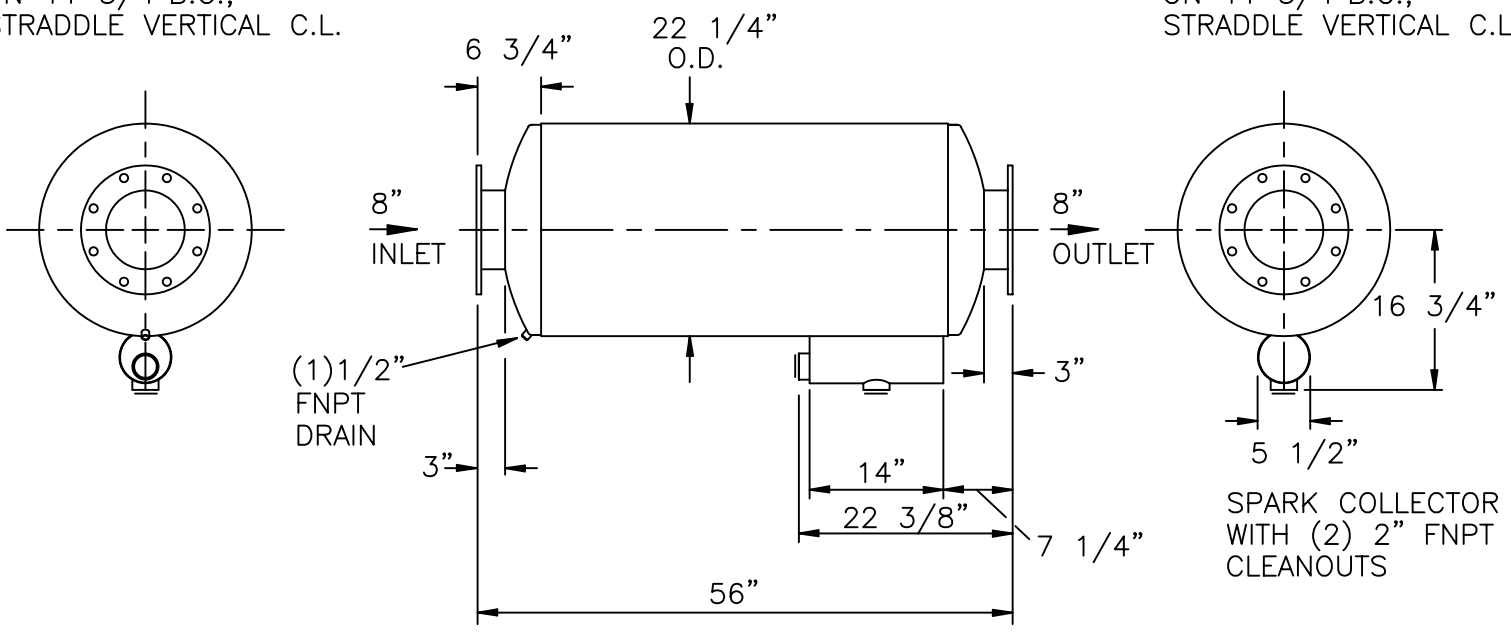


8" INLET FLANGE
 1/2" PLATE, 13 1/2" O.D.
 (8) 7/8" DIA HOLES
 ON 11 3/4" B.C.,
 STRADDLE VERTICAL C.L.

8" OUTLET FLANGE
 1/2" PLATE, 13 1/2" O.D.
 (8) 7/8" DIA HOLES
 ON 11 3/4" B.C.,
 STRADDLE VERTICAL C.L.



NOTES:

1. SERVICE: SPARK ARRESTING EXHAUST SILENCER FOR RECIPROCATING ENGINE
2. PRESSURE DROP: (4.0)* (Velocity Head In 8" I.D. Duct)
3. OCTAVE BAND ATTENUATION, dB

63	125	250	500	1k	2k	4k	8k
10	19	27	24	18	16	16	17
4. MATERIALS OF CONSTRUCTION:
 SHELL: 12 GAGE CARBON STEEL
 HEADS AND BAFFLE: 10 GA. CARBON STEEL
5. EXTERNAL PAINT: HIGH TEMPERATURE BLACK
6. WEIGHT: 265 LBS

CERTIFICATION

CUSTOMER: _____
 CUSTOMER P.O. NO.: _____

 DATE: _____ BY: _____

<h2 style="margin: 0;">MAXIM SILENCERS</h2>	10635 BRIGHTON LANE STAFFORD, TX. 77477 PHONE (832) 554-0980 FAX (832) 554-0990
---	--

8"MSA1 SPARK ARRESTING EXHAUST SILENCER

				DRAWN	TJW	7/18/04	ORDER NO.	DRAWING NO.	REV
				CHECKED				STD_8MSA1	
No.	REVISIONS	APPR.	APPROVED						