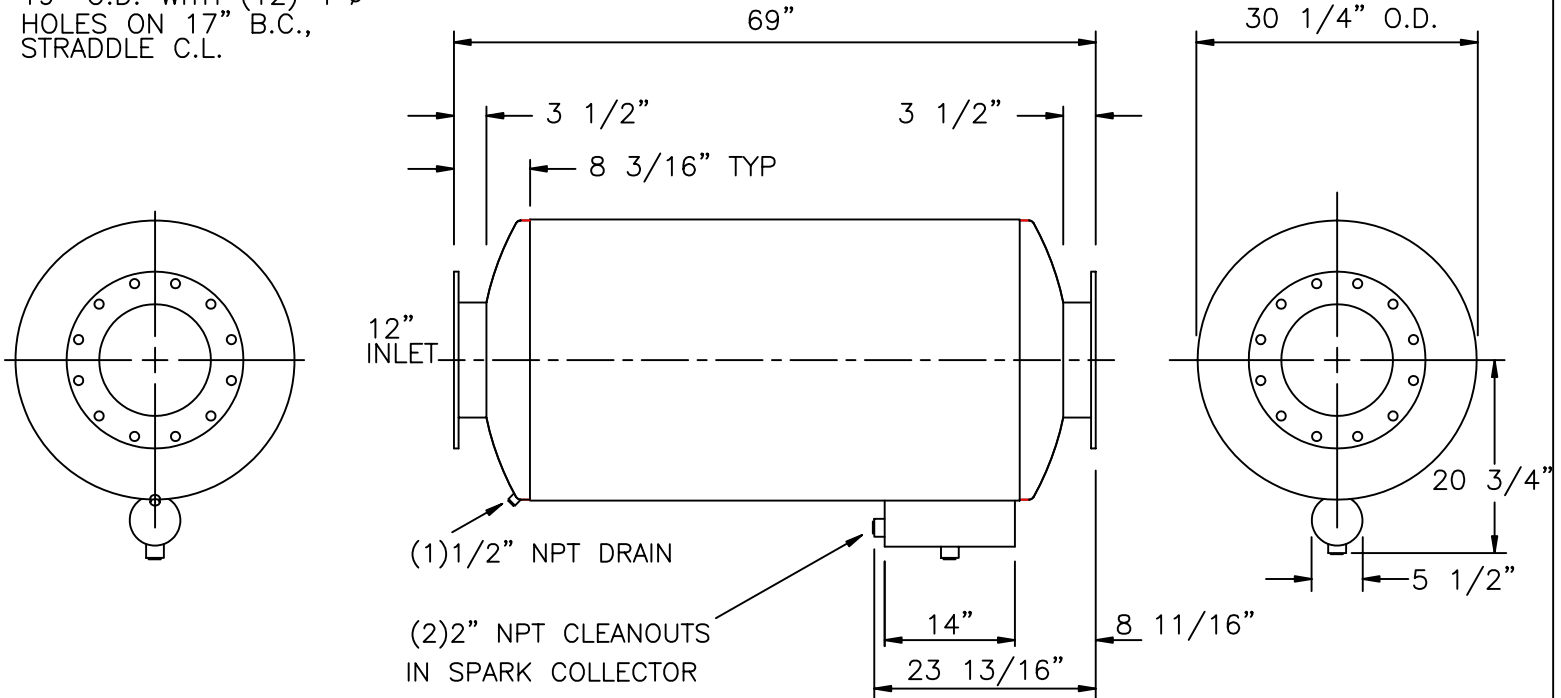


INLET AND OUTLET FLANGES:
 1/2" PLATE, 12" 150# DRILLING
 19" O.D. WITH (12) 1" ϕ
 HOLES ON 17" B.C.,
 STRADDLE C.L.



SERVICE: SPARK ARRESTING EXHAUST SILENCER FOR RECIPROCATING ENGINE

OCTAVE BAND	63	125	250	500	1K	2K	4K	8K
INSERTION LOSS	13	23	27	21	16	16	16	17

SILENCER PRESSURE DROP: 4*Velocity Head in 12" Duct

MATERIALS OF CONSTRUCTION: CARBON STEEL

SHELL: 12 GAGE CARBON STEEL
 HEADS AND BAFFLES: 3/16", F&D
 FLANGES: 1/2" PLATE

EXTERNAL PAINT: FLAT BLACK, HIGH TEMPERATURE

WEIGHT: 570 LBS

CERTIFICATION

CUSTOMER: _____

CUSTOMER P.O. NO.: _____

DATE: _____ BY: _____

MAXIM SILENCERS

10635 BRIGHTON LANE
 STAFFORD, TX. 77477
 PHONE (832) 554-0980
 FAX (832) 554-0990

12"MSA1 SPARK ARRESTING EXHAUST SILENCER

DRAWN	TJW	7/18/04	ORDER NO.	DRAWING NO.	REV
-------	-----	---------	-----------	-------------	-----

CHECKED				STD_12MSA1	
---------	--	--	--	------------	--

No.	REVISIONS	APPR.	APPROVED			Sheet 1 of 1
-----	-----------	-------	----------	--	--	--------------