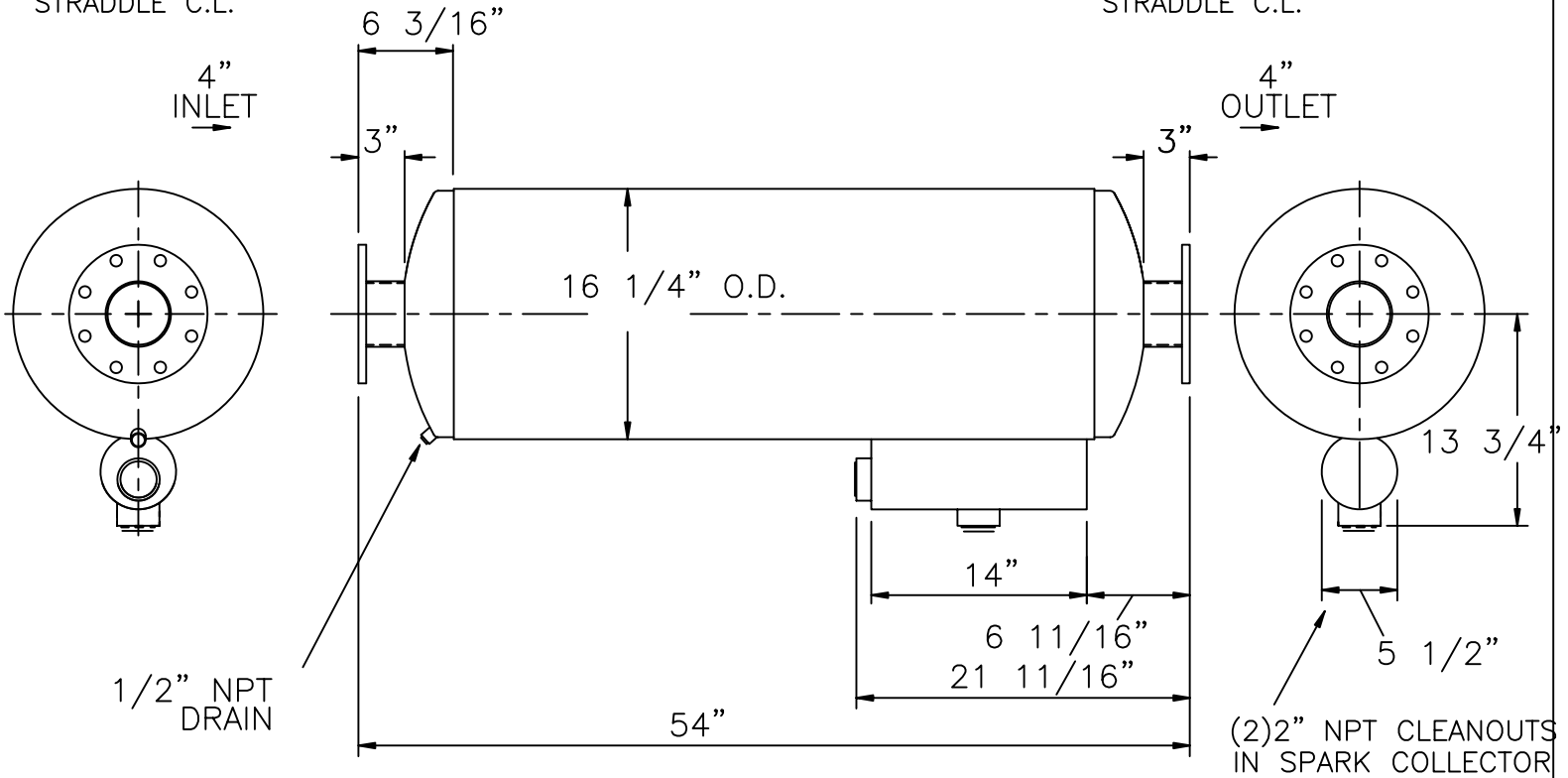


INLET FLANGE:  
 1/2" PLATE, 4" 150# DRILLING  
 9" O.D. WITH (8) 3/4"Ø  
 HOLES ON 7 1/2" B.C.,  
 STRADDLE C.L.

OUTLET FLANGE:  
 1/2" PLATE, 4" 150# DRILLING  
 9" O.D. WITH (8) 3/4"Ø  
 HOLES ON 7 1/2" B.C.,  
 STRADDLE C.L.



SERVICE: SPARK ARRESTING EXHAUST SILENCER FOR RECIPROCATING ENGINE

OCTAVE BAND    63   125   250   500   1K   2K   4K   8K  
 INSERTION LOSS   17   27   35   32   26   23   23   24

SILENCER PRESSURE DROP: (6.0)\*(VELOCITY HEAD IN 4" I.D. DUCT)

MATERIALS OF CONSTRUCTION: CARBON STEEL

SHELL: DOUBLE WRAP 16 GA  
 HEADS AND BAFFLES: 12 GAGE, F&D  
 FLANGES: 1/2" PLATE

EXTERNAL PAINT: FLAT BLACK, HIGH TEMPERATURE

WEIGHT: 120 LBS

CERTIFICATION

CUSTOMER: \_\_\_\_\_

CUSTOMER P.O. NO.: \_\_\_\_\_

DATE: \_\_\_\_\_ BY: \_\_\_\_\_

MAXIM SILENCERS

10635 BRIGHTON LANE  
 STAFFORD, TX. 77477  
 PHONE (832) 554-0980  
 FAX (832) 554-0990

4"MSA3 SPARK ARRESTING EXHAUST SILENCER

DRAWN	TJW	5/5/04	ORDER NO.	DRAWING NO.	REV
-------	-----	--------	-----------	-------------	-----

CHECKED				STD_4MSA3	
---------	--	--	--	-----------	--

No.	REVISIONS	APPR.	APPROVED			Sheet 1 of 1
-----	-----------	-------	----------	--	--	--------------